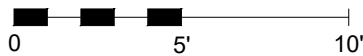
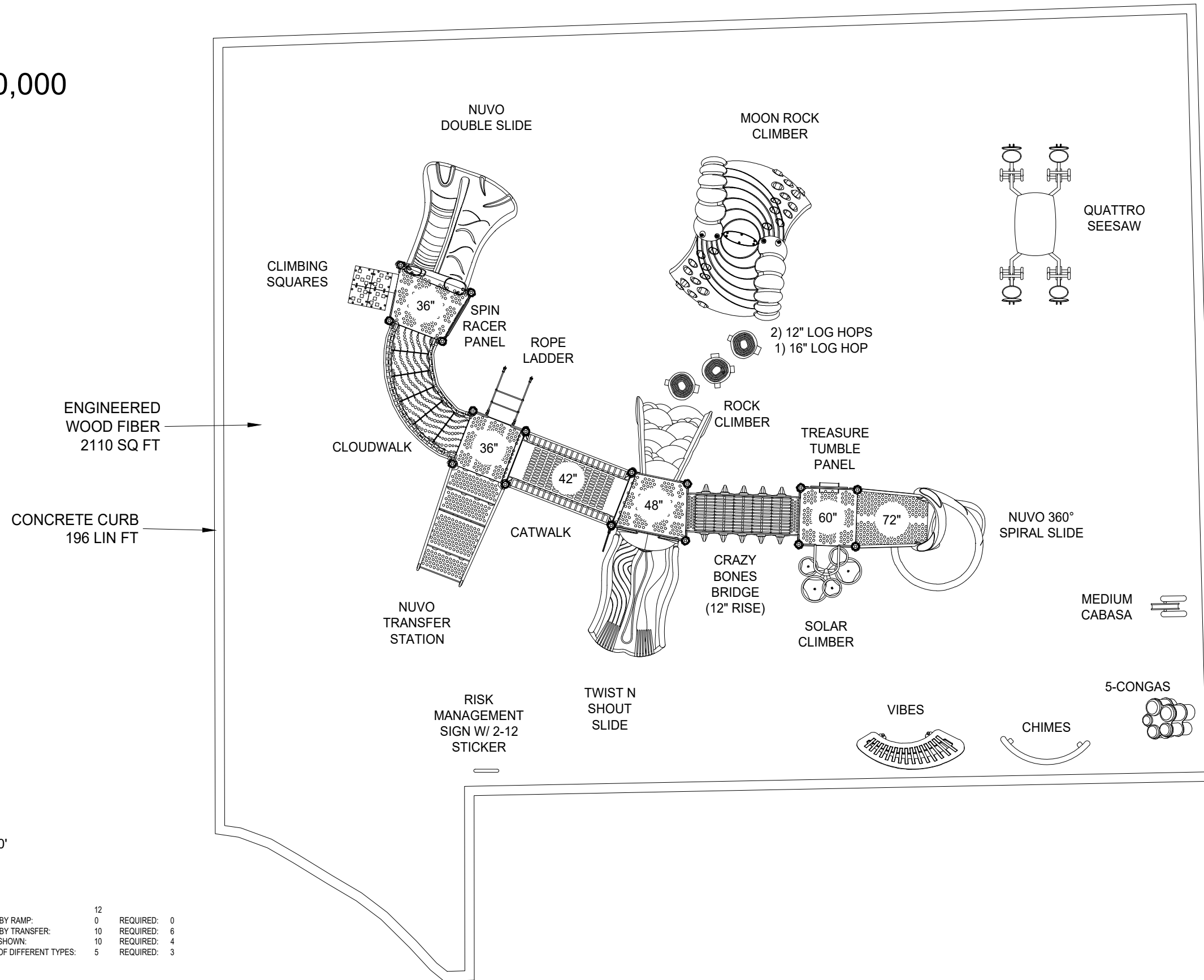


Approx. \$90,000



TOTAL ELEVATED PLAY COMPONENTS:	12	REQUIRED:	0
TOTAL ELEVATED PLAY COMPONENTS ACCESSIBLE BY RAMP:	0	REQUIRED:	6
TOTAL ELEVATED PLAY COMPONENTS ACCESSIBLE BY TRANSFER:	10	REQUIRED:	4
TOTAL ACCESSIBLE GROUND LEVEL COMPONENTS SHOWN:	5	REQUIRED:	3
TOTAL ACCESSIBLE GROUND LEVEL COMPONENTS OF DIFFERENT TYPES:	5	REQUIRED:	3

\* APPLICABLE ONLY WITH ADA COMPLIANT SURFACING.

PLAY STRUCTURE AND LAYOUT OF THE COMPONENTS CONFORM TO ASTM F1487-17 AND CPSC #325 GUIDELINES AND CCR TITLE 22, DIVISION 4 CHAPTER 22.

CRITICAL FALL HEIGHT OF OVERALL PLAY AREA: 72"

PROJECT:

# NEWLAND ELEMENTARY SCHOOL

HUNTINGTON BEACH, CA - KINDERGARTEN YARD

DESIGNED BY:

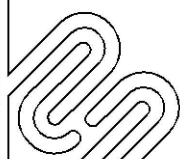
ALEX BERON  
FEBRUARY 8, 2023  
DRAWING #  
**C21168CHR1 23**

DESIGNED FOR

AGES  
**2-12**

since 1979  
**davebang**  
associates inc.

park+playground





COLOR PALETTE:



MANUFACTURERS:



PROJECT:

NEWLAND ELEMENTARY SCHOOL  
HUNTINGTON BEACH, CA - KINDERGARTEN YARD

DESIGNED BY:

ALEX BERON  
MARCH 1, 2023  
DRAWING #  
C21168CHR2 23

DESIGNED FOR:

AGES  
2-12

since 1979  
**dave bang**  
associates inc.  
park+playground





COLOR PALETTE:

MANUFACTURERS:

PROJECT: **NEWLAND ELEMENTARY SCHOOL**  
 HUNTINGTON BEACH, CA - KINDERGARTEN YARD

DESIGNED BY:  
 ALEX BERON  
 MARCH 1, 2023  
 DRAWING #  
 C21168CHR2 23

DESIGNED FOR:  
 AGES  
**2-12**

since 1979  
**dave bang**  
 associates inc.  
 park+playground

